

Steiger
& Cie

Sotheby's
INTERNATIONAL REALTY

CRANS-MONTANA

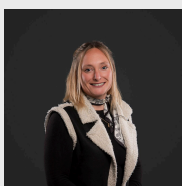


Exclusive main residence in Plans-Mayens

CHF 2'270'000.-

Parking place(s) included

Sale to non-Swiss residents/nationals: No info



Steiger&Cie Crans-Montana SA

Rue du Prado 33, 3963 Crans-Montana

Gabrielle Robiou

+41 27 771 81 73

Steiger&Cie Verbier SA
Rue de la Poste 11
CH-1936 Verbier
+41 27 771 81 71
verbier@steigercie.ch

Steiger&Cie Crans-Montana SA
Rue du Prado 33
CH-3963 Crans-Montana
+41 27 771 81 73
crans-montana@steigercie.ch

Steiger&Cie Zermatt AG
Tempel 9
CH-3920 Zermatt
+41 27 771 81 72
zermatt@steigercie.ch



SITUATION AND DESCRIPTION

Exclusivity Steiger & Cie | Sotheby's Crans-Montana

Discover the exceptional "L'Eiger" project currently under construction in Plans-Mayens, the epitome of real estate prestige in Crans-Montana. This residence promises to satisfy all your investment desires in a highly sought-after area, offering a rare opportunity to buy.

In a harmonious blend of the authenticity of old wood and the sophistication of modern materials, "L'Eiger" offers you a privileged high-altitude location right next to the ski slopes.

This project, currently under construction, consists of flats in condominium ownership (PPE). Flat 101 is available as a principal residence only.

The flats and prices given correspond to flats sold with high quality finishes, fitted kitchens, etc... A full technical description of the finishes and plans will be sent to you on request.

Don't delay in contacting us to explore this unique opportunity to live at "L'Eiger" and to obtain further information.

SURFACES

Living area	112.5 m ²
Balcony Surface	36.8 m ²

CHARACTERISTICS

Number of rooms	3.5
Number of bedrooms	2
Number of bathrooms	2
Location floor	1st floor

DISTANCES

Public transports	222 m
Stores	609 m
Restaurants	389 m



LOCATION

L'Eiger is located in an exceptional setting, offering its residents a peaceful and picturesque environment, yet within easy reach of the resort's amenities.

Nestled high up in the mountains, L'Eiger offers breathtaking views of the Valais Alps and surrounding countryside. The property enjoys a sunny position and easy access to hiking trails in summer and ski slopes in winter.

As one of Crans-Montana's prestigious addresses, Plans-Mayens embodies alpine luxury at its best, offering residents an idyllic lifestyle in one of the most sought-after destinations in the Swiss Alps.

INFORMATION

Number of floors 3
Year of construction 2025

NEIGHBOURHOOD

- Green
- Mountains
- Ski resort
- Ski lift
- Hiking trails

OUTSIDE CONVENIENCES

- Balcony/ies
- Quiet
- Greenery
- Garage
- Visitor parking space(s)

INSIDE CONVENIENCES

- Lift/elevator
- Garage
- Open kitchen
- Cellar
- Bicycle storage
- Ski storage
- Unfurnished
- Built-in closet
- Fireplace
- Bright/sunny

EQUIPMENT

- Fitted kitchen
- Shower

- Bath

FLOOR

- At your discretion

CONDITION

- New

ORIENTATION

- South

EXPOSURE

- Optimal

VIEW

- Clear
- Mountains

FINANCIAL DATA**Price****CHF 2'270'000.-****Availability**

immediately

This document is not legally binding and is supplied for information purposes only. It may not be distributed to third parties without authorisation.

Steiger
& Cie

Sotheby's
INTERNATIONAL REALTY



Steiger&Cie Verbier SA
Rue de la Poste 11
CH-1936 Verbier
+41 27 771 81 71
verbier@steigeracie.ch

Steiger&Cie Crans-Montana SA
Rue du Prado 33
CH-3963 Crans-Montana
+41 27 771 81 73
crans-montana@steigeracie.ch

Steiger&Cie Zermatt AG
Tempel 9
CH-3920 Zermatt
+41 27 771 81 72
zermatt@steigeracie.ch

Steiger
& Cie

Sotheby's
INTERNATIONAL REALTY



Steiger&Cie Verbier SA
Rue de la Poste 11
CH-1936 Verbier
+41 27 771 81 71
verbier@steigercie.ch

Steiger&Cie Crans-Montana SA
Rue du Prado 33
CH-3963 Crans-Montana
+41 27 771 81 73
crans-montana@steigercie.ch

Steiger&Cie Zermatt AG
Tempel 9
CH-3920 Zermatt
+41 27 771 81 72
zermatt@steigercie.ch

Steiger
& Cie

Sotheby's
INTERNATIONAL REALTY



Steiger&Cie Verbier SA
Rue de la Poste 11
CH-1936 Verbier
+41 27 771 81 71
verbier@steigeracie.ch

Steiger&Cie Crans-Montana SA
Rue du Prado 33
CH-3963 Crans-Montana
+41 27 771 81 73
crans-montana@steigeracie.ch

Steiger&Cie Zermatt AG
Tempel 9
CH-3920 Zermatt
+41 27 771 81 72
zermatt@steigeracie.ch

Steiger
& Cie

Sotheby's
INTERNATIONAL REALTY



Steiger&Cie Verbier SA
Rue de la Poste 11
CH-1936 Verbier
+41 27 771 81 71
verbier@steigeracie.ch

Steiger&Cie Crans-Montana SA
Rue du Prado 33
CH-3963 Crans-Montana
+41 27 771 81 73
crans-montana@steigeracie.ch

Steiger&Cie Zermatt AG
Tempel 9
CH-3920 Zermatt
+41 27 771 81 72
zermatt@steigeracie.ch